

Threaded ports sandwich body

 • $p_{max} = 350 \text{ bar}$
NG4-Mini[®]
DESCRIPTION

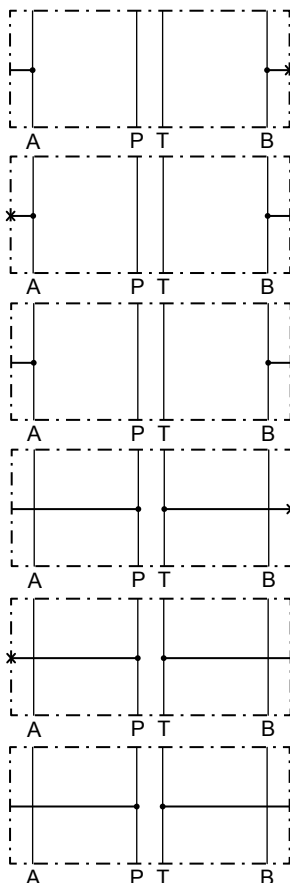
Sandwich bodies NG4-Mini according to Wandfluh standard with ports G1/4" for external connection to A and B or P and T lines. Sandwich bodies with one external connection (A, B, P, T) will have the second port plugged with plug G1/4" (article 238.2406). The sandwich bodies are zinc coated and will be supplied inclusive 5 O-rings ID 5,28x1,78 (article no. 160.2052). The connections T and To are not connected together.

APPLICATION

Threaded ports sandwich bodies in stacking systems to connect gauges, sensors or control elements.

TYPE CODE

			B	SGK	<input type="checkbox"/>	4	#	<input type="checkbox"/>
Mounting interface acc. to Wandfluh standard								
Sandwich threaded body								
Type list / Function								
	in A	<input type="checkbox"/>	in P	<input type="checkbox"/>				
	in B	<input type="checkbox"/>	in T	<input type="checkbox"/>				
	in A and B	<input type="checkbox"/>	in P and T	<input type="checkbox"/>				
Nominal size 4-Mini								
Design-Index (Subject to change)								

TYPES

 BSGKA4
 (article 203.1501)

 BSGKB4
 (article 203.1502)

 BSGKAB4
 (article 203.1500)

 BSGKP4
 (article 203.1504)

 BSGKT4
 (article 203.1505)

 BSGKPT4
 (article 203.1503)

DIMENSIONS
