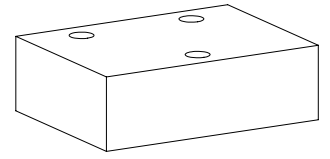


**Blanking or linking plate**

**Flange construction**

◆ p<sub>max</sub> = 350 bar

**NG4-Mini**  
Wandfluh standard



**DESCRIPTION**

Blanking plates are used for sealing all ports of the mounting interface. With linking plates, the selected links of the oil ports are connected. The other ports are closed.

**TYPE CODE**

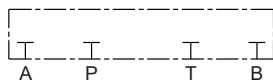
Mounting interface according to Wandfluh standard		B BP 4	-	<input type="text"/>	#	<input type="text"/>
Blanking plate <input type="checkbox"/> BP		B U 4 /		<input type="text"/>	-	<input type="text"/>
Linking plate <input type="checkbox"/> U						<input type="text"/>
Nominal size 4-Mini						
Connections of oil ports according to type list / symbol						
Sealing material	NBR <input type="checkbox"/>					
	FKM (Viton) <input type="checkbox"/> D1					
	NBR 872 <input type="checkbox"/> Z604					
Design index (subject to change)						

2.10-120

**SYMBOL**

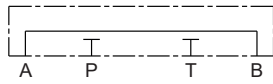
**Blanking plate**

BBP4



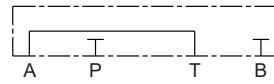
**Linking plate**

BU4 / A-B



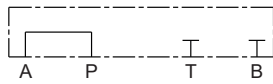
**Linking plate**

BU4 / A-T



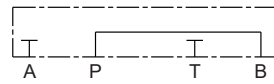
**Linking plate**

BU4 / P-A



**Linking plate**

BU4 / P-B



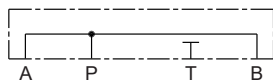
**Linking plate**

BU4 / P-T



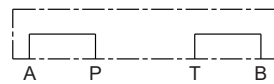
**Linking plate**

BU4 / P-A-B



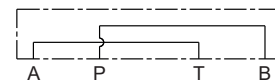
**Linking plate**

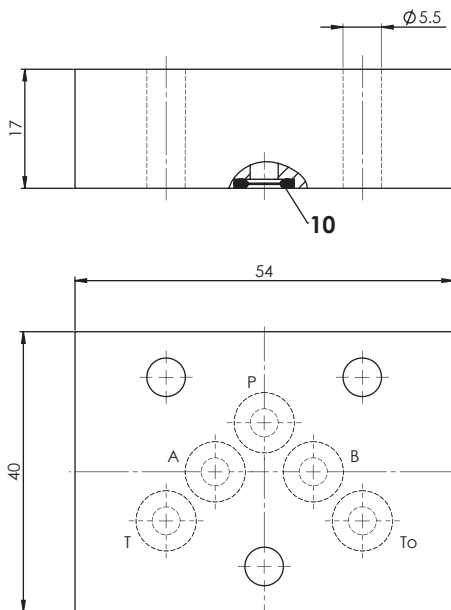
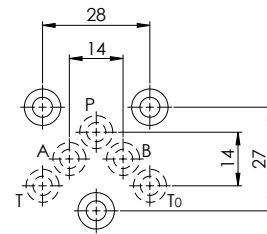
BU4 / P-A / B-T



**Linking plate**

BU4 / P-B / A-T



**DIMENSIONS**

**HYDRAULIC CONNECTION**

**PARTS LIST**

Position	Article	Description
10	160.2052	O-ring ID 5,28 x 1,78 (NBR)
	160.6052	O-ring ID 5,28 x 1,78 (FKM)

**SURFACE TREATMENT**

- ◆ The plates made of steel are zinc-nickel coated

**SEALING MATERIAL**

NBR or FKM (Viton) as standard, choice in the type code

**STANDARDS**

Mounting interface | Wandfluh standard