

Cartridge valve body

 • $p_{max} = 350 \text{ bar}$
NG16
NG25
NG32

ISO 7368

DESCRIPTION

Valve body with cavity for cartridge (logic element) size NG16, NG25 and NG32 to ISO 7368 / DIN 24342 (see data sheets 1.12-210, 1.12-220, 1.12-230). Body surface is zinc-nickel coated.

TYPE CODE

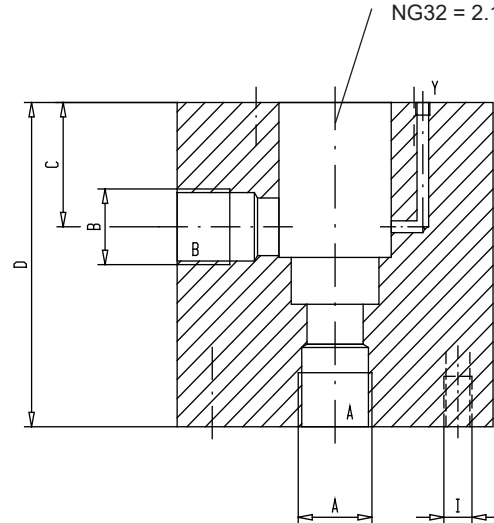
		K	<input type="text"/>	#	<input type="text"/>	
Cartridge valve body						
Nominal size	NG16	<input type="text" value="16"/>				
	NG25	<input type="text" value="25"/>				
	NG32	<input type="text" value="32"/>				
Port size for NG16	G1/2"	<input type="text" value="12"/>				
	G3/4"	<input type="text" value="34"/>				
	for NG25		G1"	<input type="text" value="100"/>		
			G1 1/4"	<input type="text" value="114"/>		
		G1 1/2"	<input type="text" value="112"/>			
for NG32		G1 1/2"	<input type="text" value="112"/>			
Design-Index (Subject to change)						

GENERAL SPECIFICATIONS

Description	Cartridge valve body
Nominal size	NG16, NG25, NG32 to ISO 7368
Mounting	4 tapped holes for fixation
Weight: NG16	m = 2,6 kg
NG25	m = 8,7 kg
NG32	m = 11,4 kg

DIMENSIONS

For detailed cavity drawing see data sheets:

 NG16 = 2.13-1021
 NG25 = 2.13-1022
 NG32 = 2.13-1023

HYDRAULIC SPECIFICATIONS

 Working pressure $p_{max} = 350 \text{ bar}$

Dimensions (in mm)			
	NG16	NG25	NG32
Port sizes A and B	G1/2" G3/4"	G1" G1 1/4" G1 1/2"	G1 1/2"
C	30	44	52
D	90	125	130
E	70	90	105
F	70	125	145
G	54	105	121
H	54	70	81
I	M6	M8	M10

