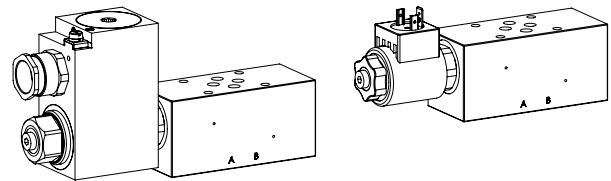


Solenoid operated poppet valve

Sandwich construction

- ◆ pilot operated
- ◆ normally open and normally closed
- ◆ $Q_{max} = 80 \text{ l/min}$
- ◆ $p_{max} = 350 \text{ bar}$

NG6
ISO 4401-03



DESCRIPTION

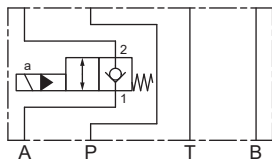
Pilot operated 2/2-way solenoid poppet valve in sandwich construction. The main spool of the built-in cartridge closes practically leakage-free by means of the applied pressure. The poppet valve is available in forward flow (V) or return flow (R), normally open (o) or normally closed (c).

APPLICATION

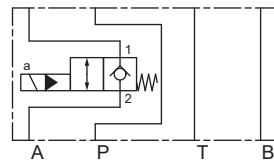
Poppet valves are used where tight closing functions of the valve are essential like leakage-free load holding, clamping or gripping.

SYMBOL

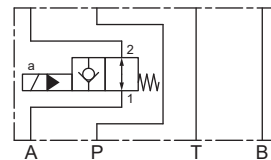
SV.SA06-AC-V



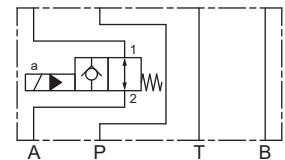
SV.SA06-AC-R



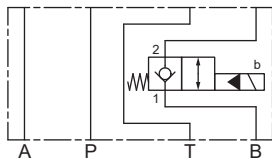
SV.SA06-AO-V



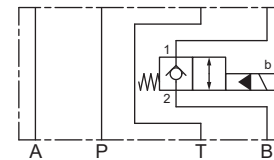
SV.SA06-AO-R



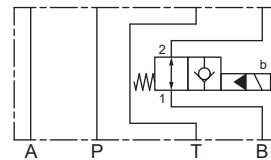
SV.SA06-BC-V



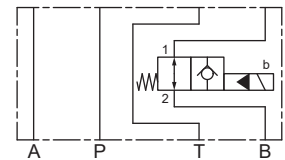
SV.SA06-BC-R



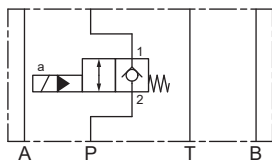
SV.SA06-BO-V



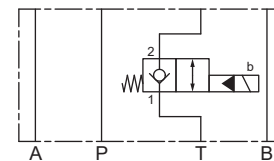
SV.SA06-BO-R



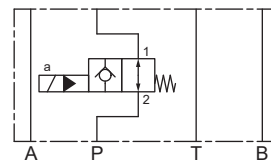
SV.SA06-PC-V



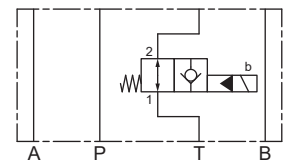
SV.SA06-TC-R



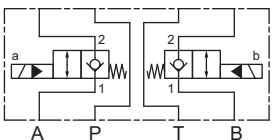
SV.SA06-PO-V



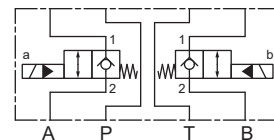
SV.SA06-TO-R



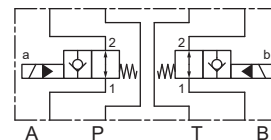
SV.SA06-ABC-V



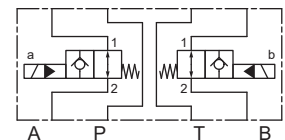
SV.SA06-ABC-R



SV.SA06-ABO-V



SV.SA06-ABO-R



TYPE CODE

Poppet valve pilot operated		SV		<input type="checkbox"/>	SA06 -	<input type="checkbox"/>	-	<input type="checkbox"/>	-	<input type="checkbox"/>	/	<input type="checkbox"/>	<input type="checkbox"/>	-	<input type="checkbox"/>	#	<input type="checkbox"/>
Coil execution	Standard	<input type="checkbox"/>	S														
	Ex-protection	<input type="checkbox"/>	Y														
Sandwich construction nominal size 6																	
Type list / Function																	
Poppet valve																	
		in P	<input type="checkbox"/>	P	in T	<input type="checkbox"/>	T										
		in A and B	<input type="checkbox"/>	AB	in A	<input type="checkbox"/>	A	in B	<input type="checkbox"/>	B							
Normally closed		<input type="checkbox"/>		C													
Normally open		<input type="checkbox"/>		O													
Forward flow		<input type="checkbox"/>		V	(not available for poppet valve in T)												
Return flow		<input type="checkbox"/>		R	(not available for poppet valve in P)												
Nominal voltage U _N		12 VDC	<input type="checkbox"/>	G12	115 VAC	<input type="checkbox"/>	R115										
		24 VDC	<input type="checkbox"/>	G24	230 VAC	<input type="checkbox"/>	R230										
Slip-on coil Standard (S)		<input type="checkbox"/>		W	<input type="checkbox"/>		M										
Ex-protection (Y)		<input type="checkbox"/>		L15	<input type="checkbox"/>		L21										
Connection execution (S)		<input type="checkbox"/>		D	<input type="checkbox"/>		J	<input type="checkbox"/>		G							
Certification (Y)		ATEX, UKEX, IECEx,		<input type="checkbox"/>		USA / Canada		<input type="checkbox"/>		UC-M187	India		<input type="checkbox"/>				PE
		EAC, CCC		<input type="checkbox"/>		MA		<input type="checkbox"/>		MA							
		Australia		<input type="checkbox"/>				<input type="checkbox"/>									
Sealing material		NBR		<input type="checkbox"/>													
		FKM (Viton)		<input type="checkbox"/>		D1											
		NBR 872		<input type="checkbox"/>		Z604											

Design index (subject to change)

1.11-2547

GENERAL SPECIFICATIONS

Designation	2/2-way poppet valve
Construction	Pilot operated
Mounting	Sandwich construction
Nominal size	NG6 according to ISO 4401-03
Actuation	Switching solenoid
Ambient temperature	-25...+70 °C
Weight	1,5 kg (only body)
MTTFd	150 years

HYDRAULIC SPECIFICATIONS

Working pressure	p _{max} = 350 bar
Maximum volume flow	Q _{max} = 80 l/min, see characteristics
Leakage oil	Poppet type, max. 0,15 ml / min (approx. 3 drops / min) at 30 cSt
Fluid	Mineral oil, other fluid on request
Viscosity range	12 mm ² /s...320 mm ² /s
Temperature range fluid	-25...+70 °C (NBR) -20...+70 °C (FKM)
Contamination efficiency	Class 20 / 18 / 14
Filtration	Required filtration grade β 10...16 ≥ 75, see data sheet 1.0-50

ACTUATION

Actuation	Switching solenoid, wet pin push type, pressure tight
Execution	W.E37 / 19 x 40 (Data sheet 1.1-169) M.E35 / 19 x 40 (Data sheet 1.1-171) MKY45 / 18 x 60 (data sheet 1.1-183)

INSTALLATION NOTES

Mounting type	Sandwich mounting 4 fixing holes for socket head screws or studs M5
Mounting position	Any, preferably horizontal
Tightening torque	Fixing screws M _D = 5,2 Nm (screw quality 8.8, zinc coated)

Note!


Other specifications, see data sheet of the screw-in cartridges

PERFORMANCE SPECIFICATIONS

Attention! The performance data especially the „pressure-flow characteristic,“ on the data sheets of the screw-in cartridges refer to the screw-in cartridges only. The additional pressure drop of the sandwich body must be taken into consideration.



Note!



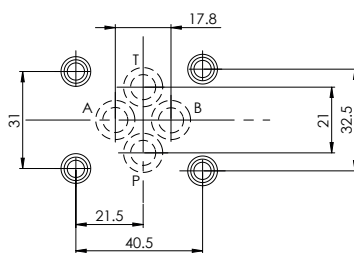
Detailed characteristics as well as further hydraulic specifications can be found on the data sheet of the cartridge installed.

VALVES INSTALLED

The following screw-in cartridges are used in the sandwich body.

Article	Description	Data sheet no.
SVSPM22-BC	Poppet valve, normally closed	1.11-2082
SVSPM22-CB	Poppet valve, normally open	1.11-2082
SVYPM22-BC	Poppet valve ex-protection, normally closed	1.11-2084
SVYPM22-CB	Poppet valve ex-protection, normally open	1.11-2084

HYDRAULIC CONNECTION



ACCESSORIES

Fixing screws	Data sheet 1.0-60
Threaded subplates	Data sheet 2.9-30
Multi-station subplates	Data sheet 2.9-60
Module type manifold blocks	Data sheet 2.9-100
Technical explanations	Data sheet 1.0-100
Filtration	Data sheet 1.0-50
Relative duty factor	Data sheet 1.1-430

PARTS LIST

Position	Article	Description
10	160.2093	O-ring ID 9,25 x 1,78 (NBR)
	160.6092	O-ring ID 9,25 x 1,78 (FKM)
20	238.5404	Screw plug VSTI M22 x 1,5

STANDARDS

Mounting interface	ISO 4401-03
Solenoids	DIN VDE 0580
Connection execution D	EN 175301 – 803
Protection class	EN 60 529
Contamination efficiency	ISO 4406

MANUAL OVERRIDE

Screw plug (HB0), no actuation possible
 Optionally: HB4,5, HN(K) or HG(K)
 → See data sheet 1.1-311

SEALING MATERIAL

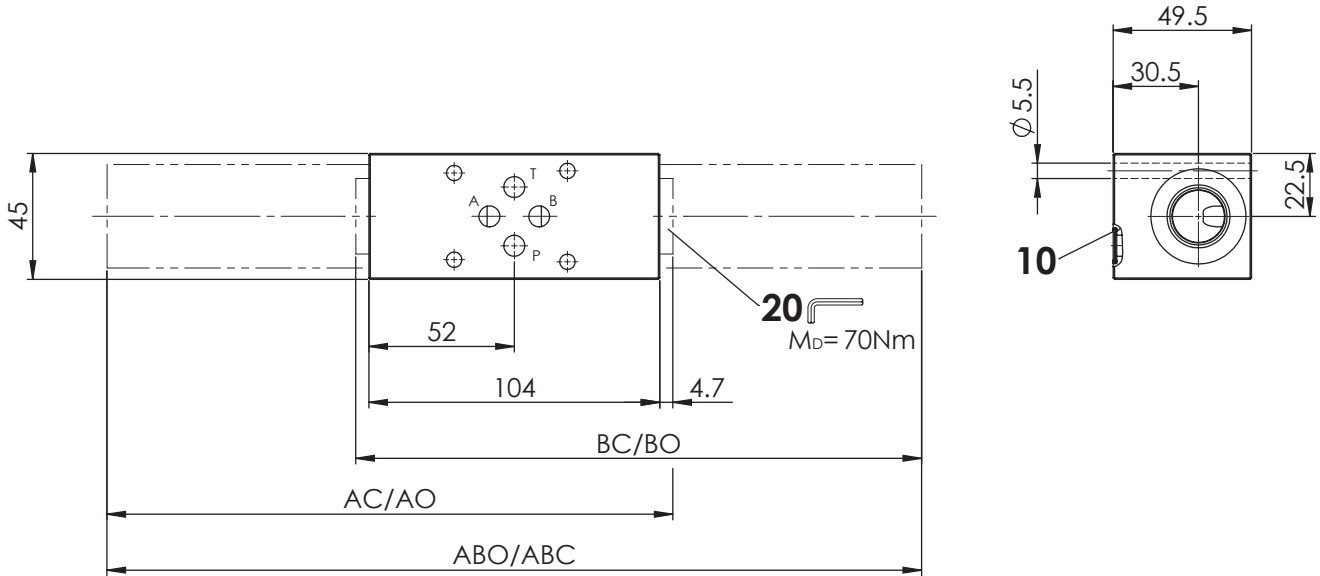
NBR or FKM (Viton) as standard, choice in the type code

SURFACE TREATMENT

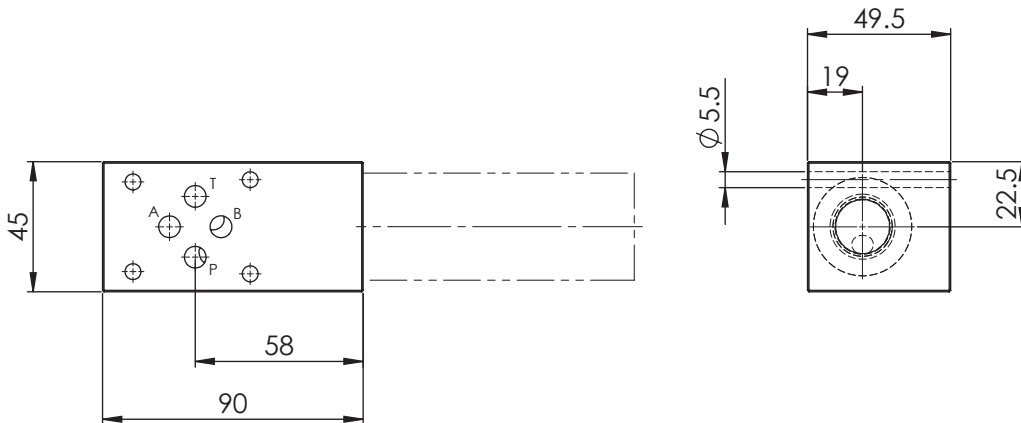
◆ The sandwich bodies are zinc-nickel coated

DIMENSIONS

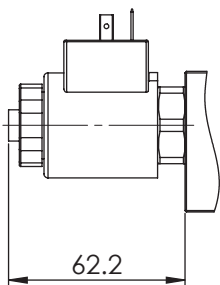
SV.SA06-AC / A0 / BC / BO / ABC / ABO



SV.SA06-PC / PO / TC / TO



SVSSA06



SVVSA06

