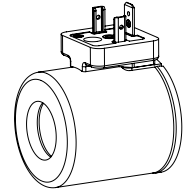


**Solenoid coil W.S45/23 x 50
 to VDE 0580
 Protection class IP 65/67/69K**

DESCRIPTION

The slip-on solenoid coil W.S45/23x50 is available in three different connection versions (see type code). The construction corresponds to the VDE 0580 standard. The housing is made of steel (zinc-/nickel-coated), the connector socket is made of plastic material.

FUNCTION

With the combination of an armature tube the function of a switching solenoid or of a proportional solenoid results. The solenoid coils are available with the standard nominal voltages 12 VDC and 24 VDC.

APPLICATION

The solenoid coils are mainly utilised in hydraulic applications.

TYPE CODE

Metal housing round		W	<input type="checkbox"/>	S45 / 23 x 50 -	<input type="checkbox"/>	#	<input type="checkbox"/>
Connection execution							
Connector socket EN 175301-803/ISO 4400	<input type="checkbox"/>	D					
Connector socket AMP Junior-Timer	<input type="checkbox"/>	J					
Connector Deutsch DT04-2P	<input type="checkbox"/>	G					
Coil execution							
Internal coil diameter 23 mm							
Coil length 50 mm							
Nominal voltage U _N	<input type="checkbox"/>	12 VDC	<input type="checkbox"/>	G12			
	<input type="checkbox"/>	24 VDC	<input type="checkbox"/>	G24			
Design-Index (Subject to change)							

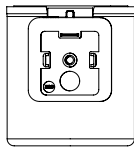
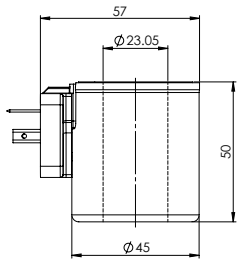
SPECIFICATIONS

		12 VDC	24 VDC
Coil winding			
insulation class	H (180 °C)		
Relative duty factor	100 % DF / ED combined with armature tube and valve	Nominal power (W) (Switching function)	28
Ambient temperature	-20...+70 °C	Limiting power (W) (Proportional function)	18
Corrosion protection	Salt spray test according to EN ISO 9227:≥ 1000 h	Limiting current (50 °C) (A) (Proportional function)	1,56
		Nominal resistance (Ω)	5,3
		Number of windings (-)	700
		Weight of solenoid coil (kg)	0,36
			0,78
			20,6
			1330
			0,36

SAFE OPERATION

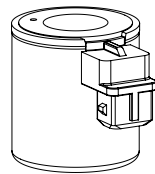
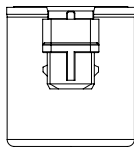
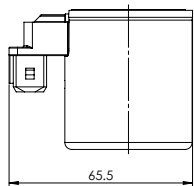
Caution: Because of the danger of over-heating the solenoid coil must only be commissioned together with an armature tube as well as with a valve.

TYPE LISTE / DIMENSIONS / GENERAL SPECIFICATIONS



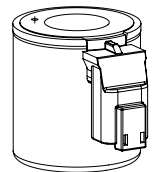
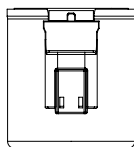
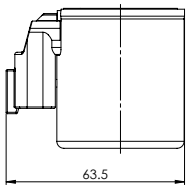
Execution: W **D** S45/23x50-...

- 3-poles 2 P+E
 - Protection class IP 65
- With corresponding mating connector (not included in delivery) and professional assembly.



Execution: W **J** S45/23x50-...

- 2-poles 2P
 - only for $U_N \leq 75$ VDC
 - Protection class IP 66
- With corresponding mating connector (not included in delivery) and professional assembly.



Execution: W **G** S45/23x50-...

- 2-poles 2P
 - only for $U_N \leq 75$ VDC
 - Protection class IP 67 and 69 K
- With corresponding mating connector (not included in delivery) and professional assembly.

Technical explanation see data sheet 1.1-400 and 1.1-410