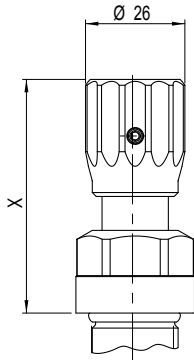


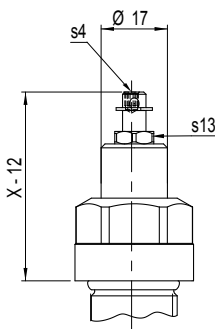
**Types of adjustment  
for manual screw-in cartridges**



**Turning knob "D"**  
Ordering example:  
BV**D**PM22-350

Standard adjustment

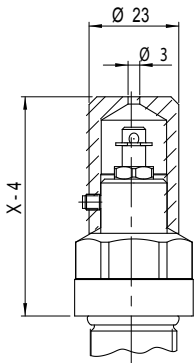
Materials of the adjustment:  
Plastic



**Key "S"**  
Ordering example:  
MV**S**PM22-63

Standard adjustment

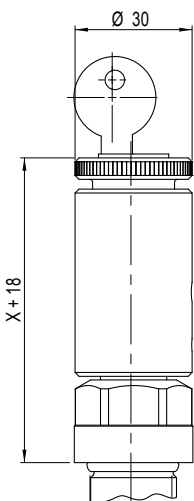
Materials of the adjustment:  
Steel zinc-coated



**Cover "A"**  
Ordering example:  
MV**A**PM22-63

Addition to adjustment type "S"  
On the face there is a small bore which, if required, allows the user to insert a sealing wire.  
**Important:** The necessary cross bore in the adjusting spindle has to be drilled by the customer. We recommend a bore diameter of 2 mm.

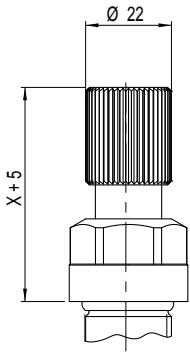
Materials of the adjustment:  
Steel zinc-coated



**Lock "K"**  
Ordering example:  
MV**K**PM22-63

The lockable adjustment

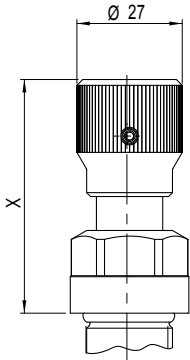
Materials of the adjustment:  
Aluminium



**Turning knob "D-Z545"**  
Ordering example:  
BV**D**PM22-350-**Z545**

The slightly more robust adjustment

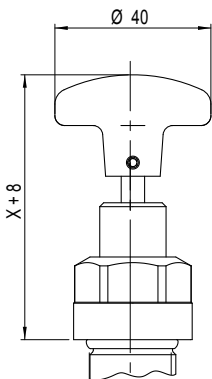
Materials of the adjustment:  
Aluminium anodized



**Turning knob "D-K9Z656"**  
Ordering example:  
BV**D**PM22-350-**Z656**

The rust-free adjustment

Materials of the adjustment:  
stainless steel (1.4436)



**Turning knob "G"**  
Ordering example:  
BV**G**PM22-350

The comfortable adjustment

Materials of the adjustment:  
stainless steel (1.4301)